

# LPD3025-4

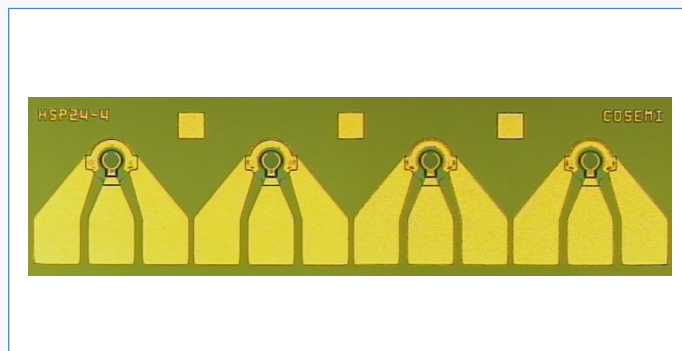
## InGaAs PIN Photodiode 1x4 Array

### APPLICATIONS

- Long-haul optical networks
- Single mode datacom/telecom
- 40G DP-QPSK
- 100 Gigabit Ethernet
- Fiber-optic transceivers, receivers and transponders

### FEATURES

- Large aperture
- Low operating voltage
- Low capacitance



Cosemi's LPD3025-4 is a mesa-structured, InGaAs-based PIN photodiode 1x4 array offering high responsivity, low dark current and low capacitance for high bandwidth, high performance optical receiver designs.

The large, co-planar ground-signal-ground contact pads allow for convenient automated wirebonding or flip-chip attachment and low parasitic capacitance.

**Proprietary and Confidential Information** - Information contained in this document is proprietary and confidential to Cosemi. Accordingly, any reproduction, distribution or disclosure of such information without the express written consent of Cosemi is strictly prohibited.